

NightFINDER-LED™ Navigation/Security System

The Brightest Beam You'll Never See™

Features



***Navigation and Security System
combined into one Product!***

- **Visible LED Beam:** Services a distance of over 800 Meters.
- **"Invisible" Infrared (IR) LED Beam:** Services a distance of over 1000 meters (850 nanometers)
- **Strobe:** Disorienting effect on the intruder transforms the searchlight into a Nonlethal Weapon.
- **Proportional-Speed Joystick:** Speed changes proportionally with Joystick movement.
- **Position Indicator:** LCD Panel on Controller provides Horizontal and Azimuth Position in degrees.
- **Auto-Home Return:** Automatically returns to Home Position after a period of non-usage.
- **HD Lowlight Color Camera:** Hi-resolution Camera with Digital Zoom is a Color Camera by day, and automatically switches to Night Vision Camera at night, covertly "seeing" with the LED IR Beam.
- **SmartVIEW™ Control:** Digital Microprocessor Control System provides Intelligent "Joystick Switching" and compatibility with the following protocols: RS232, RS422, TCP/IP and NMEA 0183
- **Finish:** Beautiful Sparkling Chrome, Salt-Resistant White Powder Coat and custom Powder Coat Colors.

A "Unique" Security Solution... The NightFINDER-LED™ strategically combines LED Visible Light, a Long Range LED Infrared (IR) Beam, a Powerful Strobe and a Lowlight High Resolution HD Color Day/Night Camera, within one versatile product. Unlike Thermal Cameras, the IR Beam will penetrate glass, read names and numbers on vessels, identify weapons which have no heat signature, and produce a clear and crisp video image. This unique technology does not replace a FLIR® System, but rather works synergistically with it, to provide the customer a Total Security System.

Here is how it works... The operator scans the horizon using the IR Beam like an "Invisible Headlight" seeing in total darkness. When an intruder is spotted, the IR Beam is used as a **"Covert Targeting Device"** to instantly illuminate the target with the Visible Beam, and if there is danger, the Powerful Strobe transforms the searchlight into a Nonlethal Weapon!



***C&F services the World's most
prestigious Super Yachts!***



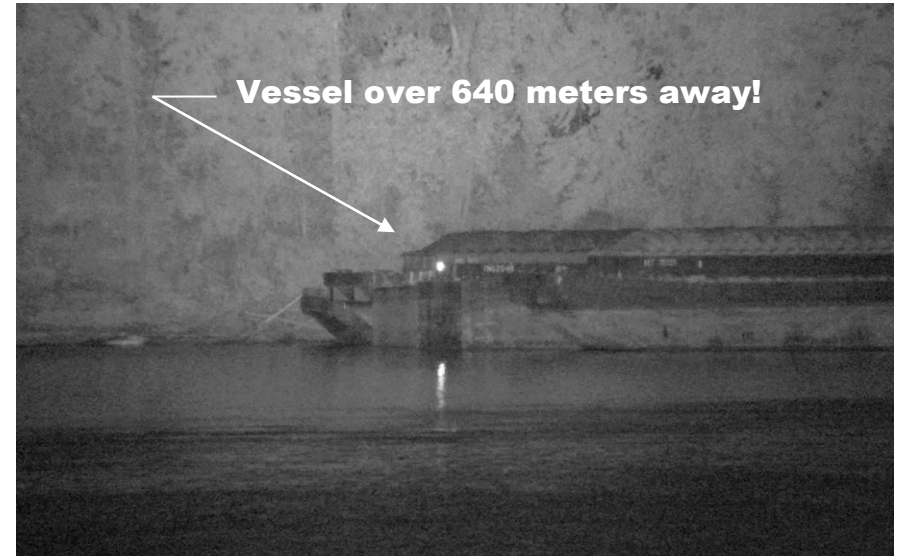
Lighting the way forward since 1894!



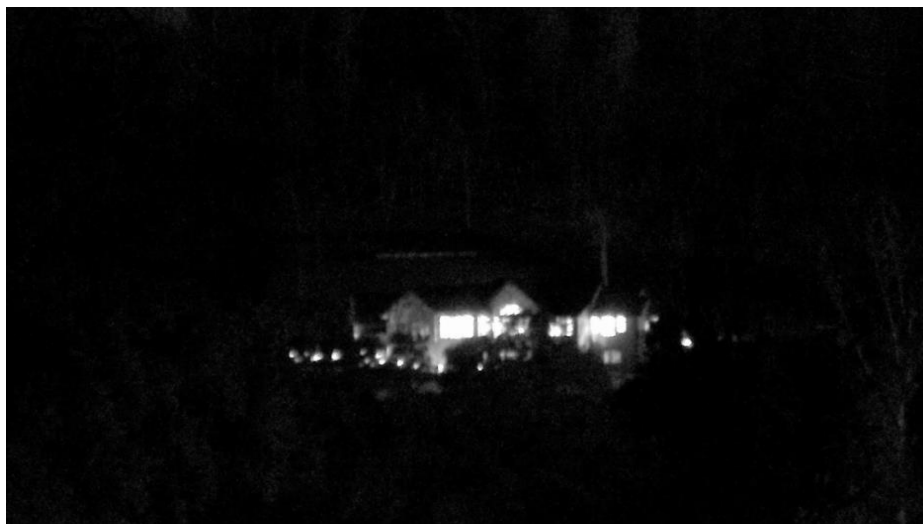
The Brightest Beam You'll Never See™



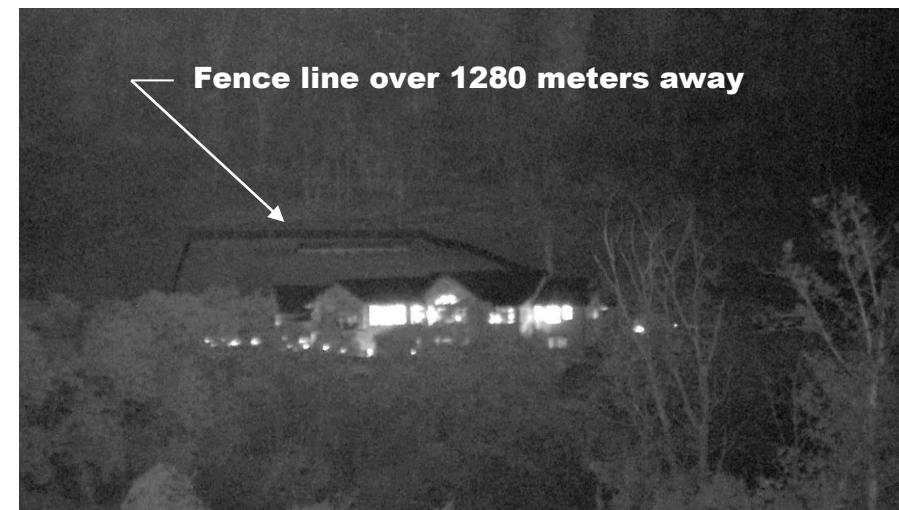
Harbor seen in Total Darkness



Harbor with IR Illuminator ON!



House on Dark Shoreline

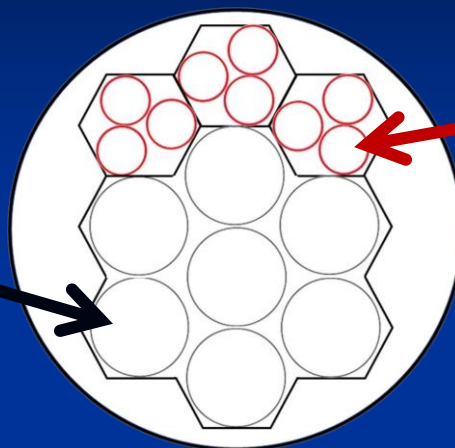


House with IR Illuminator ON!



Hybrid System with both Invisible IR and Visible LED's

**7-LED POD
"Visible"**

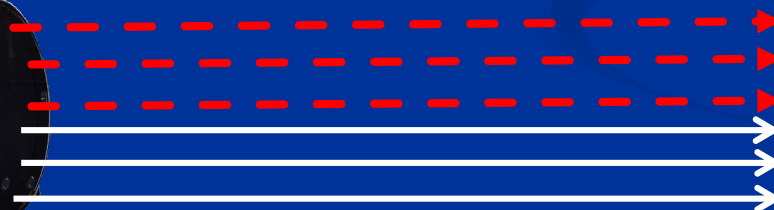


(Front View)

**9-LED IR POD
"Invisible"**



**Lowlight Color
Camera**

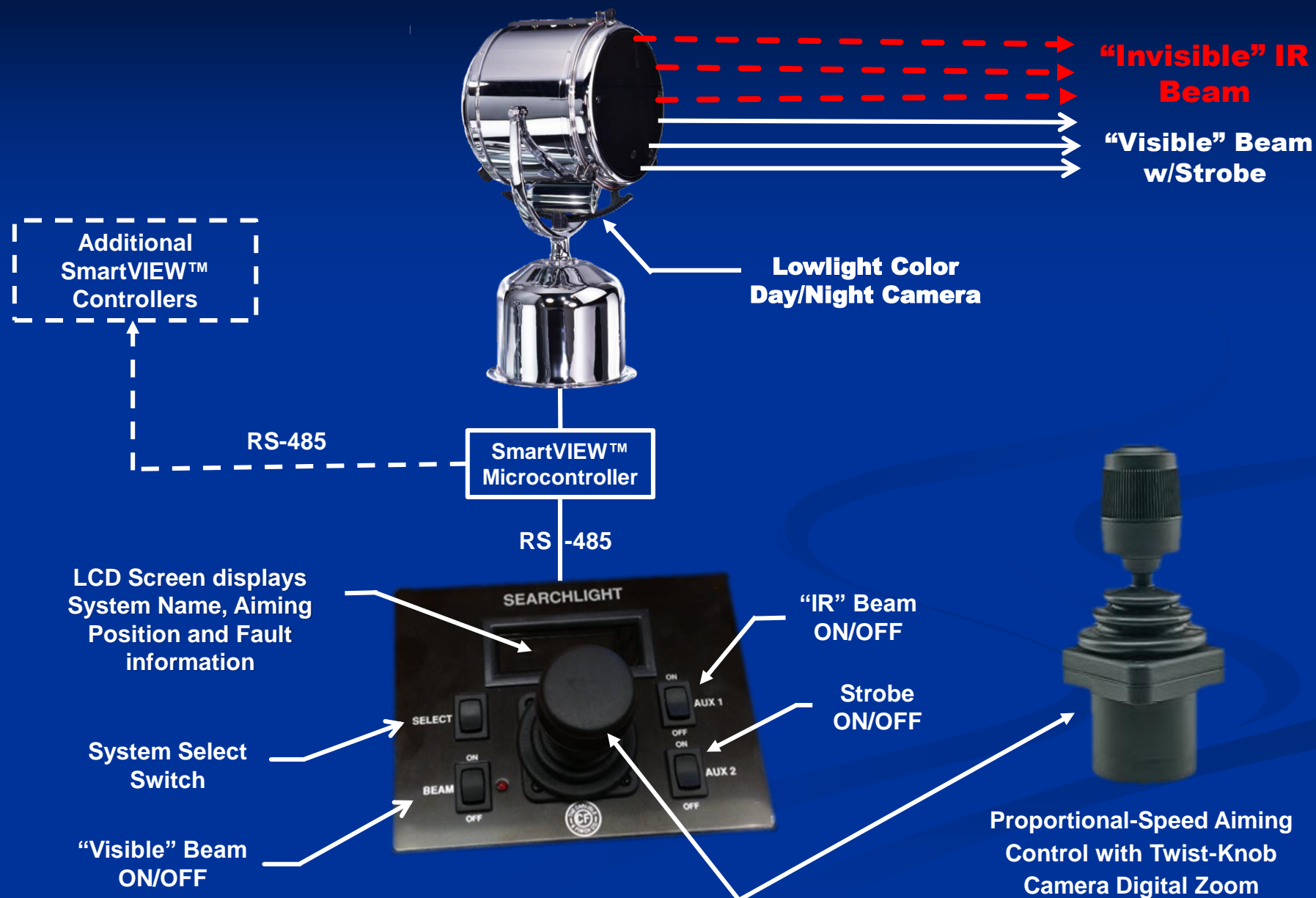


**Invisible Covert
IR Beam**

**Visible Beam
with Strobe**

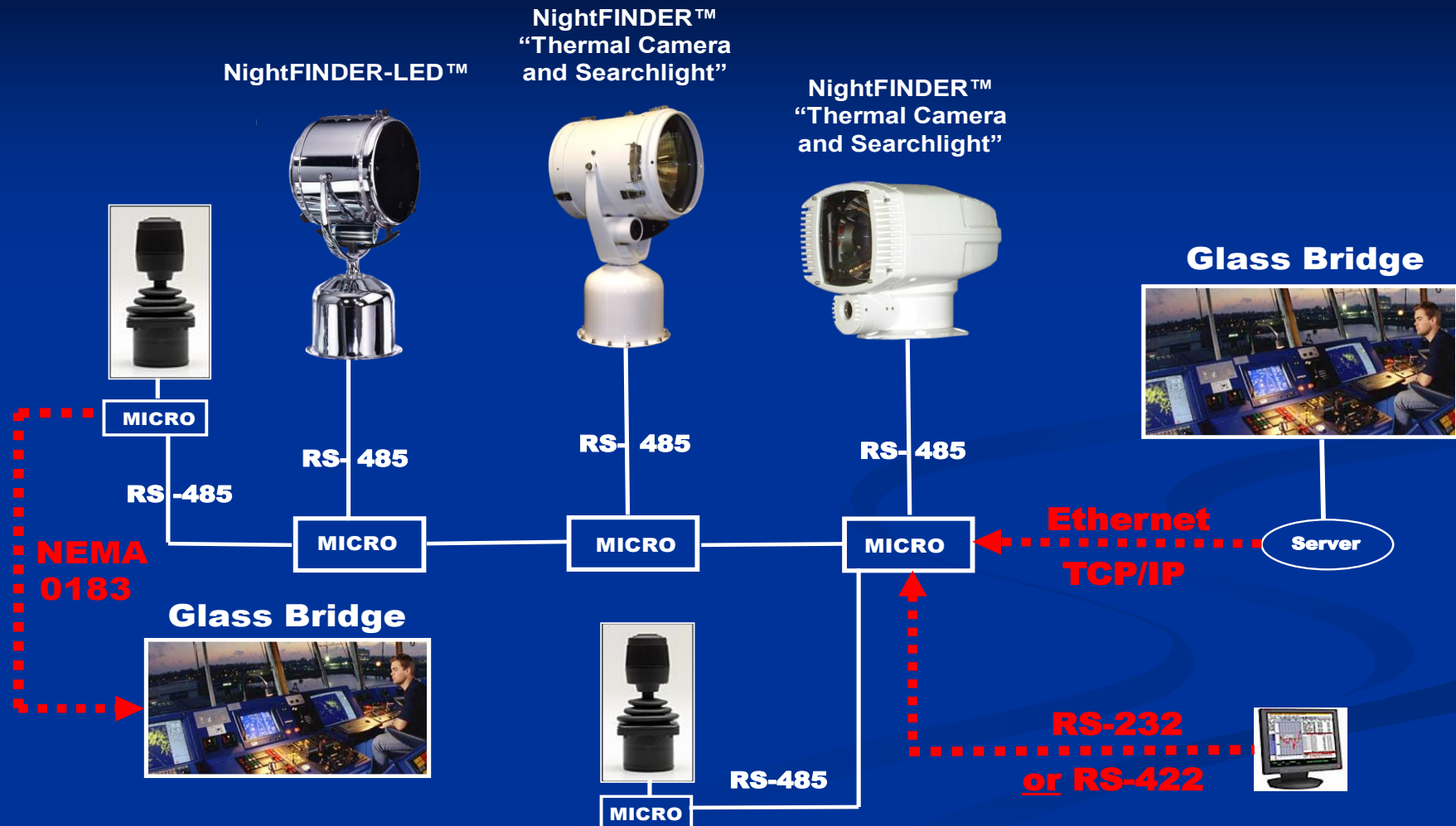


NightFINDER-LED™ System





SmartVIEW™ Security Network



Description: See above a Classic NightFINDER™ Xenon Searchlight, Sleek NightFINDER™ Xenon Searchlight, and The NightFINDER-LED™ (chrome) connected within a SmartVIEW™ Network. All Security Technologies are represented, i.e. High Intensity Searchlights with Strobe Function, Thermal Camera Sensors and Covert LED Infrared Beam with Lowlight Camera, which provides the owner a **Total Security Solution!** Any of the Joystick Controllers can select, and control, all of the systems, and the system name, and position-indication, is displayed on an LCD Panel. Likewise, the remote glass bridges can also remotely access any of the systems, through a variety of protocols. And all of the systems will automatically return to the HOME Position, when not being used.

13.25
(336.550mm)

13.75
(349.250mm)

27.56
(700.024mm)

20.25
(514.350mm)

Ø10.813
(Ø274.650mm)
Bolt Circle

Front

Rear

Qty (16) Holes
.281 DIA
(7.137mm)
22.50° Apart

Deck Mounting
Footprint above

SmartVIEW™ Controller

Technical drawing of the SmartVIEW™ Controller showing front, top, and side views with dimensions.

Front View Dimensions:

- Overall Width: 14.00 (355.60mm)
- Overall Height: 16.28 (413.5mm)
- Mounting Flange Width: 6.22 (157.98mm)
- Mounting Flange Height: 16.00 (406.40mm)
- Mounting Flange Thickness: 16.750 (425.5mm)
- Mounting Flange Diameter: $\phi .31$ (#7 938mm) 4X

Top View Dimensions:

- Overall Width: 14.41 (366.014mm)
- Overall Height: 14.97 (380.3mm)
- Internal Width: 12.000 (304.80mm)

Side View Dimensions:

- Overall Width: 14.41 (366.014mm)
- Overall Height: 14.97 (380.3mm)
- Internal Width: 12.000 (304.80mm)

Internal Components:

- Two large rectangular modules (likely power supplies or controllers) are mounted on the left side.
- A central control unit with a display screen and buttons is located in the middle.
- Various connectors, switches, and components are visible on the right side.

Mounting Flange:

- The flange features four mounting holes, each with a diameter of $\phi .31$ (#7 938mm).
- A warning label is present on the flange, reading "DANGER Lock Out by Padlock".

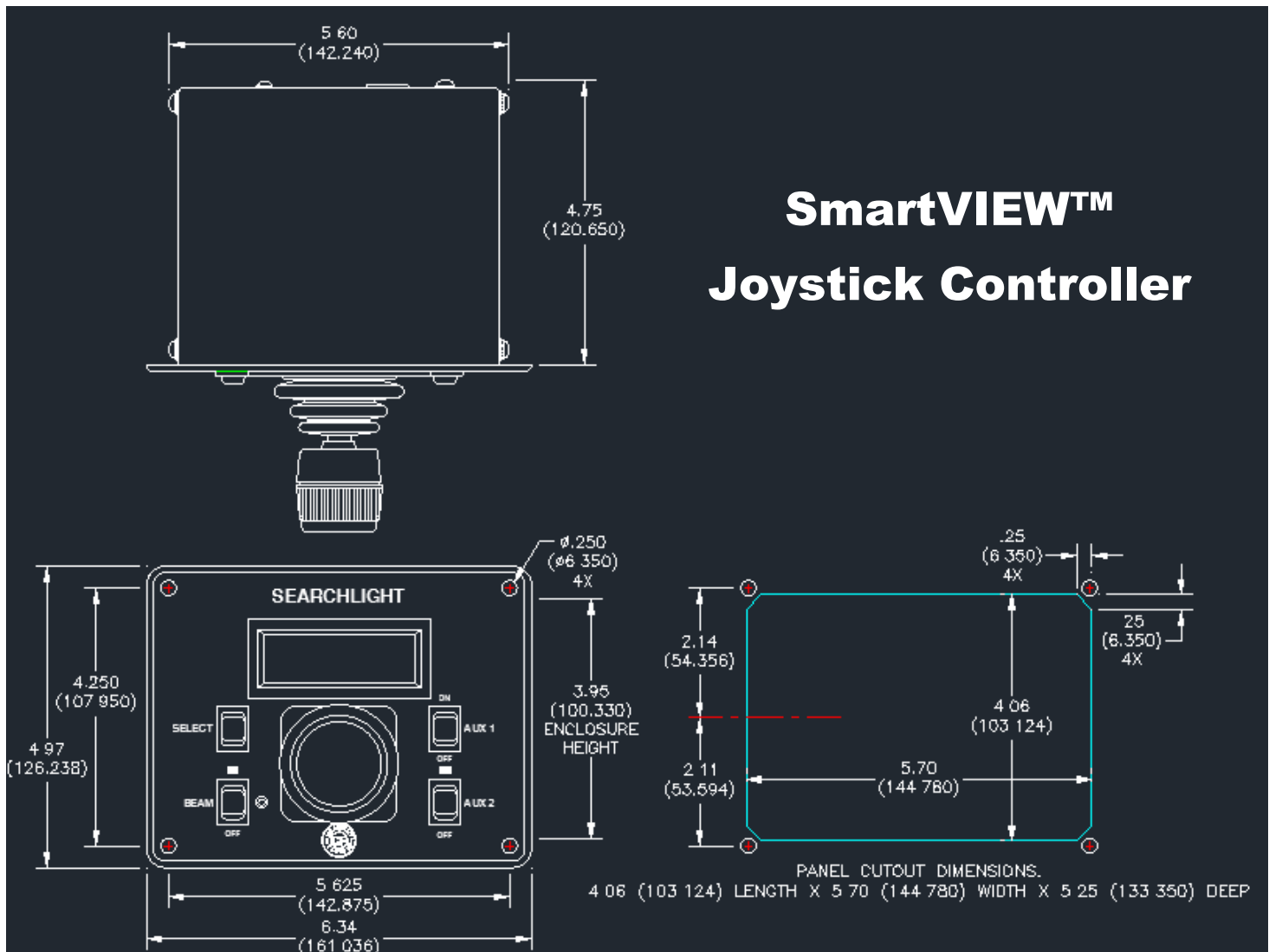
Dimensions:

- 14.00 (355.60mm)
- 14.41 (366.014mm)
- 12.000 (304.80mm)
- 14.97 (380.3mm)
- 16.28 (413.5mm)
- 16.750 (425.5mm)
- 6.22 (157.98mm)
- 16.00 (406.40mm)
- $\phi .31$ (#7 938mm) 4X

SmartVIEW™ Controller

Bulletin L152. Page 1

Dimensions Inches (mm)



How to Specify a System

NightFINDER-LED™	SmartVIEW™ Controller	Joystick Controller
12LBC-SV-1IR-AC (Brass Chrome)	DWG15040-222011 (IP Video)	C4-SV (Standard)
or	or	or
12LBE-SV-1IR-AC (White Powder Coat)	DWG15040-222012 (Analog Video)	*C4-SV-1 (Joystick ships detached and customer supplies switches. Use C4ESV-1 for Weatherproof)

How to Specify... read across table above, and select NightFINDER-LED™ Model with Chrome or Powder Coat, select the SmartVIEW™ Controller model with IP Video or Analog Video, and select the Standard Joystick Controller or the “Detached Joystick”, where the customer uses the C&F Multifunctional Joystick, but supplies custom switches for Beam ON/OFF, Beam FOCUS, and Optional Features (Camera, IR, Strobe, etc.)